



# LCD Display Controller Board Specification V1.1

Model Name	STI-IDB07-P V1.1
Release Date	2022-5-26
Release Version	V1.1

Prepared by	Checked by	Approved by
George	Helen	Jack

---

## Shuwei Intelligent Control Technology (shenzhen) Co., Ltd.

Web: [www.saivytech.com](http://www.saivytech.com)

Email: [ryan@saivytech.com](mailto:ryan@saivytech.com)

MP/Wechat: +86-13829282691

Add: 9th Floor, Bldg 1, Zhongyu Hightech Park, Gongming Subdistrict, Guangming District, Shenzhen, China

# Contents

1. Features.....	2
2. Specifications.....	3
3. Function Layout.....	4
4. Interface Definition.....	5
5. Mechanical Dimensions.....	10
6. Configuration and Precautions.....	11
7. Key Materials List.....	12

## Revision History

Revision	Date	Page	Description	Author
1.0	2021.12.21	All	First issued.	George
1.1	2022.5.26	2	Headphones output change to audio in	George
1.1	2022.5.26	3	Add audio item	George
1.1	2022.5.26	4	Update PCBA photograph	George
1.1	2022.5.26	10	Update PCBA dimensions	George

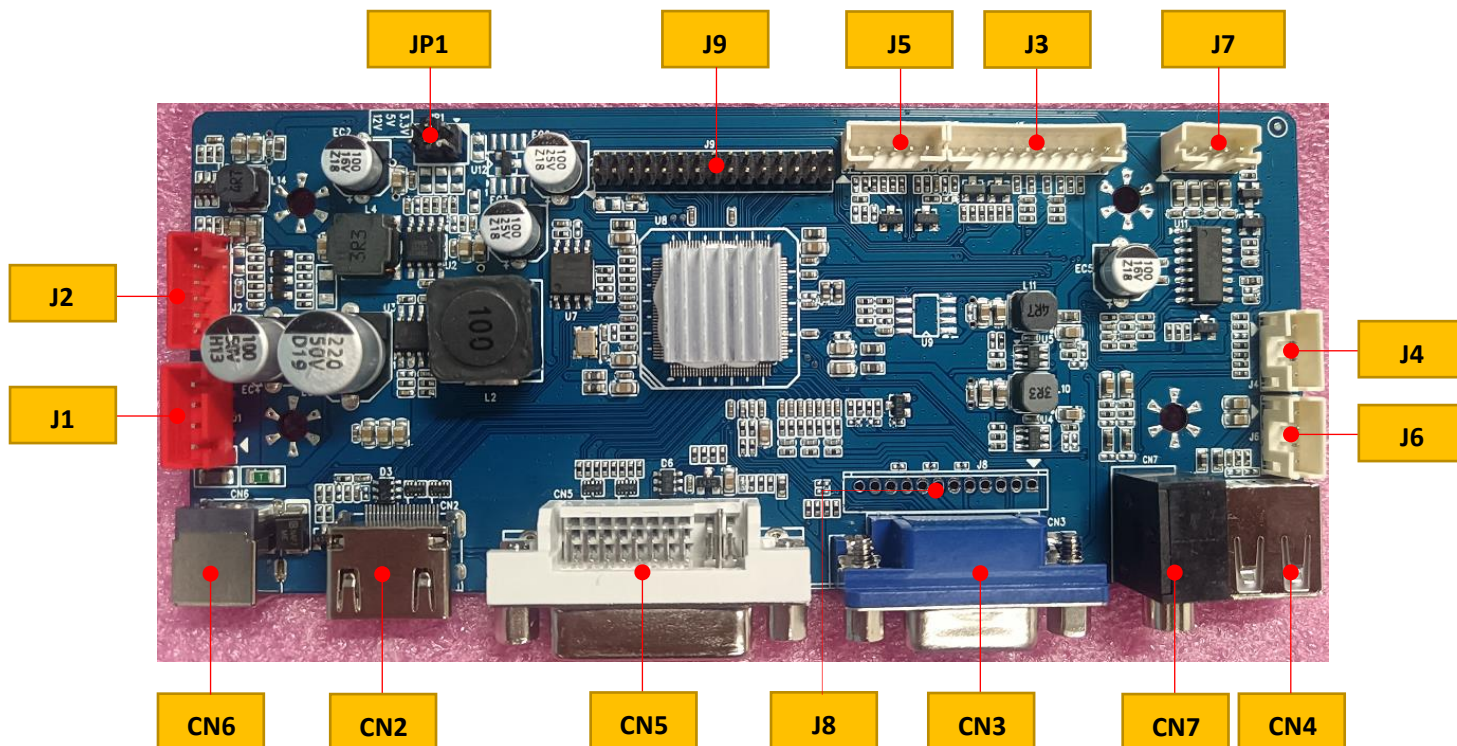
## 1. Features

- ✚ Resolution up to 1920x1200@60Hz
- ✚ Support 1-ch/2-ch 6-bit/8-bit LVDS panel
- ✚ Support 3.3V/5V/12V panel voltage
- ✚ 1\*VGA input
- ✚ 1\*DVI input
- ✚ 1\*HDMI1.4a input
- ✚ Build-in 2x3W Class-D AMP at 4ohm
- ✚ Support Audio in
- ✚ Support Keypad (5Key/6Key/7Key)
- ✚ Support IR remote controlling (NEC Code)
- ✚ Support USB bypass touch-panel
- ✚ 12V~24V DC power input
- ✚ 12V or 24V is optional for Backlight power supply
- ✚ Standby mode power consumption less than 0.5W
- ✚ Support DDC/CI/2B protocol
- ✚ Support UART protocol (TTL-Level)
- ✚ Support external sensor controlling (via I2C or ADC)

## 2. Specifications

Chipset	RTD25xx	
Target Market	Industrial Display	
OSD Language	English、Simplified Chinese	
Panel	Type	LCD/LED
	Voltage	3.3V/5V/12V
	Interface	1-ch/2-ch 6-bit/8-bit LVDS
	Max. Resolution	1920x1200@60Hz
LED Backlight	Power Supply	12V or 24V is optional
	Dimming	PWM/DC (Default is PWM)
Video Input	VGA	15P D-Sub, Max. resolution is 1920x1080@60Hz
		PH2.0mm 12P, Max. resolution is 1920x1080@60Hz
	DVI	24+5 DVI-I (SL), Max. resolution is 1920x1200@60Hz
	HDMI 1.4a	19P Type-A, Max. resolution is 1920x1080@60Hz
Audio	Input	Line in
	Output	2x3W@4Ω (THD+N<10%@1KHz) (Power Supply: 5V, Audio Input: 0.5Vrms)
USB	USB2.0	Type-A (bypass to PH2.0 4P)
Power	Power Input	DC 12V~24V
	Normal Consumption	Max. 3W (Board Only)
	Standby Consumption	< 0.5W (Board Only)
User Key Function	Power、Menu、Right、Left、Exit、Auto (Default)	

### 3. Function Layout



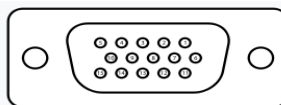
J1	Internal Power Input	XH2.54mm 4P
J2	Backlight Control	PH2.0mm 6P
J3	Keypad	PH2.0mm 9P
J4	UART	PH2.0mm 4P
J5	External Sensor Control	PH2.0mm 5P
J6	Touch	PH2.0mm 4P
J7	Speaker	PH2.0mm 4P
J8	Internal VGA input	PH2.0mm 12P (optional)
J9	LVDS Output	2x15Pin 2.0mm pitch
CN7	Audio Input	3.5mm phone jack
CN6	External Power Input	2.0 DC Jack
CN5	DVI Signal Input	24+5 DVI-I Single-Link
CN4	USB	USB2.0 Type-A
CN3	VGA Signal Input	D-Sub 15P
CN2	HDMI Signal Input	HDMI Type-A 19P
JP1	Panel Voltage Select	2x3Pin 2.0mm pitch

## 4. Interface Definition

### 4.1 VGA Signal Input

Location - CN3: 15P Female D-Sub

Pin assignment and definition:

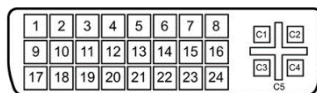


Pin No.	Symbol	Description	Pin No.	Symbol	Description
1	VGA_R+	RED video	9	VGA5V	VGA 5V power supply
2	VGA_G+	GREEN video	10	GND	Ground
3	VGA_B+	BLUE video	11	GND	Ground
4	GND	Ground	12	DDC SDA	IIC serial data
5	GND	Ground	13	HSIN	Horizontal sync
6	VGA_R-	RED return	14	VSIN	Vertical sync
7	VGA_G-	GREEN return	15	DDC SCL	IIC serial clock
8	VGA_B-	BLUE return			

### 4.2 DVI Signal Input

Location - CN5: 24+5P

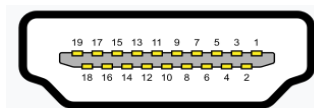
Pin assignment and definition:



Pin No.	Symbol	Description	Pin No.	Symbol	Description
1	Data2-	TMDS data2-	13	NC	
2	Data2+	TMDS data2+	14	+5V	+5V power supply
3	GND	Ground	15	GND	Ground
4	NC		16	HPD	Hot plug detection
5	NC		17	Data0-	TMDS data0-
6	DDC-SCL	IIC serial clock	18	Data0+	TMDS data0+
7	DDC-SDA	IIC serial data	19	GND	Ground
8	NC		20	NC	
9	Data1-	TMDS data1-	21	NC	
10	Data1+	TMDS data1+	22	GND	Ground
11	GND	Ground	23	Clock+	TMDS clock+
12	NC		24	Clock-	TMDS clock-
C1	NC		C4	NC	
C2	NC		C5	NC	
C3	NC				

### 4.3 HDMI Signal Input

Location - CN2: 19P Type-A



Pin assignment and definition:

Pin No.	Symbol	Description	Pin No.	Symbol	Description
1	Data2+	TMDS data2+	11	GND	Ground
2	GND	Ground	12	Clock-	TMDS clock-
3	Data2-	TMDS data2-	13	CEC	CEC
4	Data1+	TMDS data1+	14	NC	NC
5	GND	Ground	15	DDC SCL	IIC serial clock
6	Data1-	TMDS data1-	16	DDC SDA	IIC serial data
7	Data0+	TMDS data0+	17	GND	Ground
8	GND	Ground	18	+5V	+5V power supply
9	Data0-	TMDS data0-	19	HPD	Hot plug detection
10	Clock+	TMDS clock+			

### 4.4 Power Input (External) Connector

Location - CN6: DC2.0 JACK (5.5\*2.1mm)



### 4.5 Power Input (Internal) Connector

Location - J1: 4P wafer pitch = 2.54mm Red

Pin assignment and definition:

Pin No.	Symbol	Description	Pin No.	Symbol	Description
1	GND	Ground	3	12V	DC 12V~24V input
2	GND	Ground	4	12V	DC 12V~24V input

### 4.6 Backlight Control Connector

Location - J2: 6P wafer pitch = 2.0mm Red

Pin assignment and definition:

Pin No.	Symbol	Description	Parameter
1	12V	Power supply for backlight	+12V/+24V power supply
2	12V	Power supply for backlight	+12V/+24V power supply
3	ENA	Backlight on/off control	High: > 4V, Low: < 1V
4	ADJ	PWM signal for dimming	DC 0~5V
5	GND	Ground	
6	GND	Ground	

#### 4.7 Speaker Connector

Location - J7: 4P wafer pitch = 2.0mm

Pin assignment and definition:

Pin No.	Symbol	Description	Pin No.	Symbol	Description
1	L+	Speaker output left ch+	3	R-	Speaker output right ch-
2	L-	Speaker output left ch-	4	R+	Speaker output right ch+

#### 4.8 Sensor Control Connector

Location - J5: 5P wafer pitch = 2.0mm

Pin assignment and definition:

Pin No.	Symbol	Description	Pin No.	Symbol	Description
1	VCC	DC +5V (or +3.3V) power supply	4	SCL	IIC Clock
2	GND	Ground	5	SDA	IIC Data
3	ADC	LS ADC			

#### 4.9 UART Connector

Location - J4: 4P wafer pitch = 2.0mm

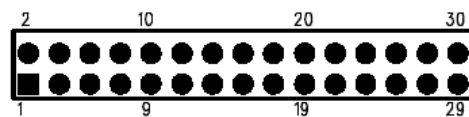
Pin assignment and definition:

Pin No.	Symbol	Description	Pin No.	Symbol	Description
1	VCC	DC +5V (or +3.3V) power supply	3	TXD	UART Tx
2	RXD	UART Rx	4	GND	Ground

#### 4.10 LVDS Interface Connector

Location - J9: 2x15P pitch = 2.0mm

Pin assignment and definition:



Pin No.	Symbol	Description	Pin No.	Symbol	Description
1	VCC	Power supply for panel	16	TXOC+	LVDS odd clock channel+
2	VCC	Power supply for panel	17	TXO3-	LVDS odd channel 3-
3	VCC	Power supply for panel	18	TXO3+	LVDS odd channel 3+
4	GND	Ground	19	TXE0-	LVDS even channel 0-
5	GND	Ground	20	TXE0+	LVDS even channel 0+
6	GND	Ground	21	TXE1-	LVDS even channel 1-
7	TXO0-	LVDS odd channel 0-	22	TXE1+	LVDS even channel 1+
8	TXO0+	LVDS odd channel 0+	23	TXE2-	LVDS even channel 2-
9	TXO1-	LVDS odd channel 1-	24	TXE2+	LVDS even channel 2+



10	TXO1+	LVDS odd channel 1+	25	GND	Ground
11	TXO2-	LVDS odd channel 2-	26	GND	Ground
12	TXO2+	LVDS odd channel 2+	27	TXEC-	LVDS even clock channel-
13	GND	Ground	28	TXEC+	LVDS even clock channel+
14	GND	Ground	29	TXE3-	LVDS even channel 3-
15	TXOC-	LVDS odd clock channel-	30	TXE3+	LVDS even channel 3+

#### 4.11 Keypad Connector

Location - J3: 10P wafer pitch = 2.0mm

Pin assignment and definition:

Pin No.	Symbol	Description	Default	Pin No.	Symbol	Description	Default
1	K0	Key0 input	On/Off	6	K2	Key2 input	Left
2	LED_R	Red LED ctrl.	Red LED	7	K3	Key3 input	Auto
3	LED_G	Green LED ctrl.	Green LED	8	K4	Key4 input	Menu
4	GND	Ground	Ground	9	K5	Key5 input	Exit
5	K1	Key1 input	Right	10	K6	Key6 input	N/A

#### 4.12 Internal VGA Signal Input

Location - J8: 12P pitch = 2.0mm

Pin assignment and definition:

Pin No.	Symbol	Description	Pin No.	Symbol	Description
1	GND	Ground	7	G	Green Video
2	VS	Vertical sync	8	GND	Ground
3	HS	Horizontal sync	9	B	Blue Video
4	GND	Ground	10	GND	Ground
5	R	Red Video	11	SDA	IIC serial data
6	GND	Ground	12	SCL	IIC serial clock

#### 4.13 Touch Panel Connector

Location - J6: 4P wafer pitch = 2.0mm

Pin assignment and definition:

Pin No.	Symbol	Description	Pin No.	Symbol	Description
1	USB-5V	USB +5V	3	D-	USB data-
2	D+	USB data+	4	GND	Ground



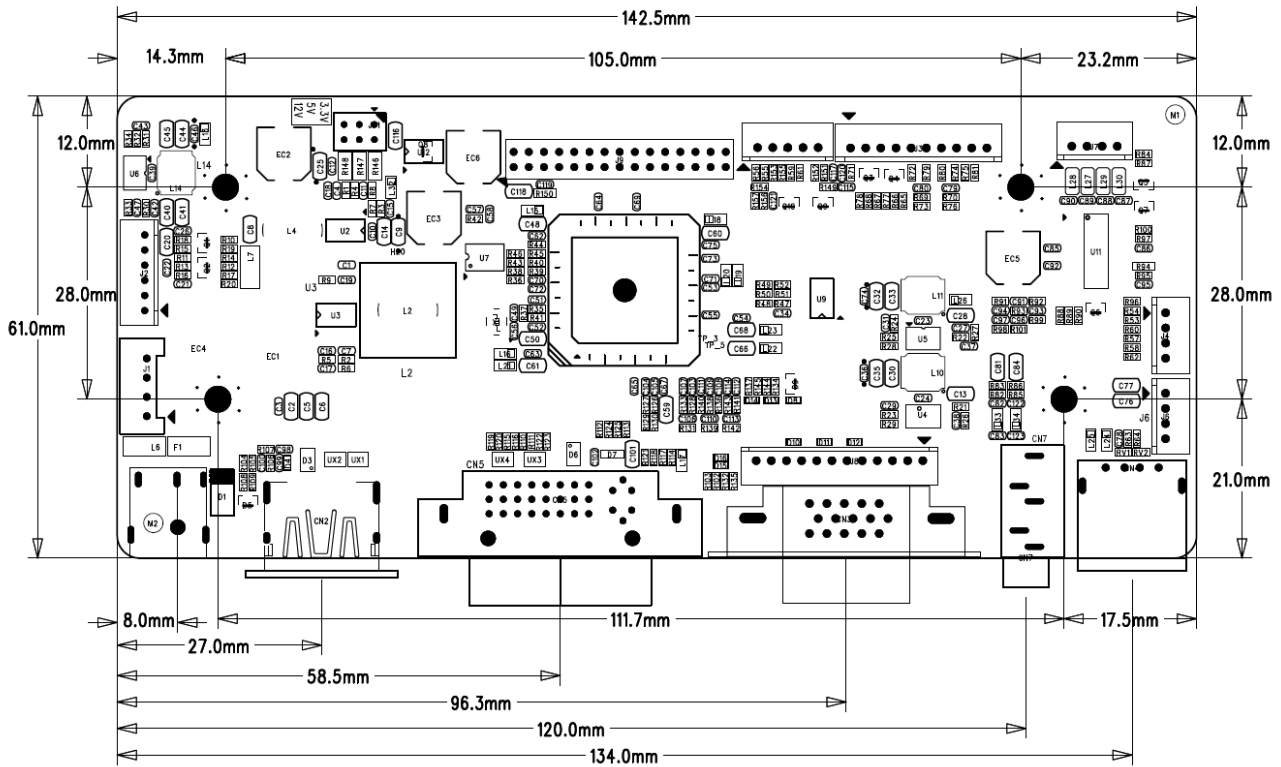
4.14 USB Connector

Location - CN4: USB2.0 Type-A

4.15 Panel Voltage Select

Location - JP1: 2x3P pitch = 2.0mm

## 5. Mechanical Dimensions



### PCB Dimensions

- ✚ PCB Length = 142.5mm
- ✚ PCB Width = 61.0mm
- ✚ PCB Thickness = 1.6mm
- ✚ PCBA (PCB + Component) Thickness ≤ 15.0mm
- ✚ Screw Hole Diameter = 3.5mm

## 6. Configuration and Precautions

### 6.1 Temperature

- ✚ Storage: -30°C ~ +80°C
- ✚ Operation: -20°C ~ +70°C

### 6.2 Humidity

- ✚ Storage: 5%~95% (non-condensing)
- ✚ Operation: 10%~90% (non-condensing)

### 6.3 Altitude

- ✚ Storage: 20000ft (Max.)
- ✚ Operation: 10000ft (Max.)

## 7. Key Materials List

No.	Part Number	Function Description	Vendor
1	RTD25xx	Scaler	Realtek
2	EUP3270	DC-DC	EUTECH
3	FR9855	DC-DC	Fitipower
4	FR8205	DC-DC	Fitipower
5	JW5052	DC-DC	Joulwatt
6	ZB25VQ80	SPI flash	Zbit
7	NS4205	Class-D AMP	Nsiway
8	X32251431818MSB4SI	SMD Crystal	YXC
9	PCB	1.6mm FR-4 E=4.2 ±10% 2-Layers 1.0oz 142.5x61.0mm	JLC